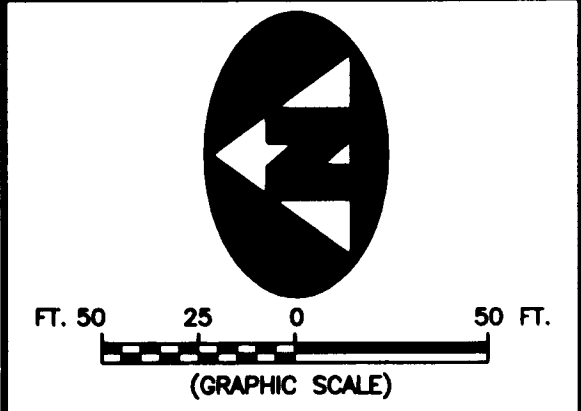
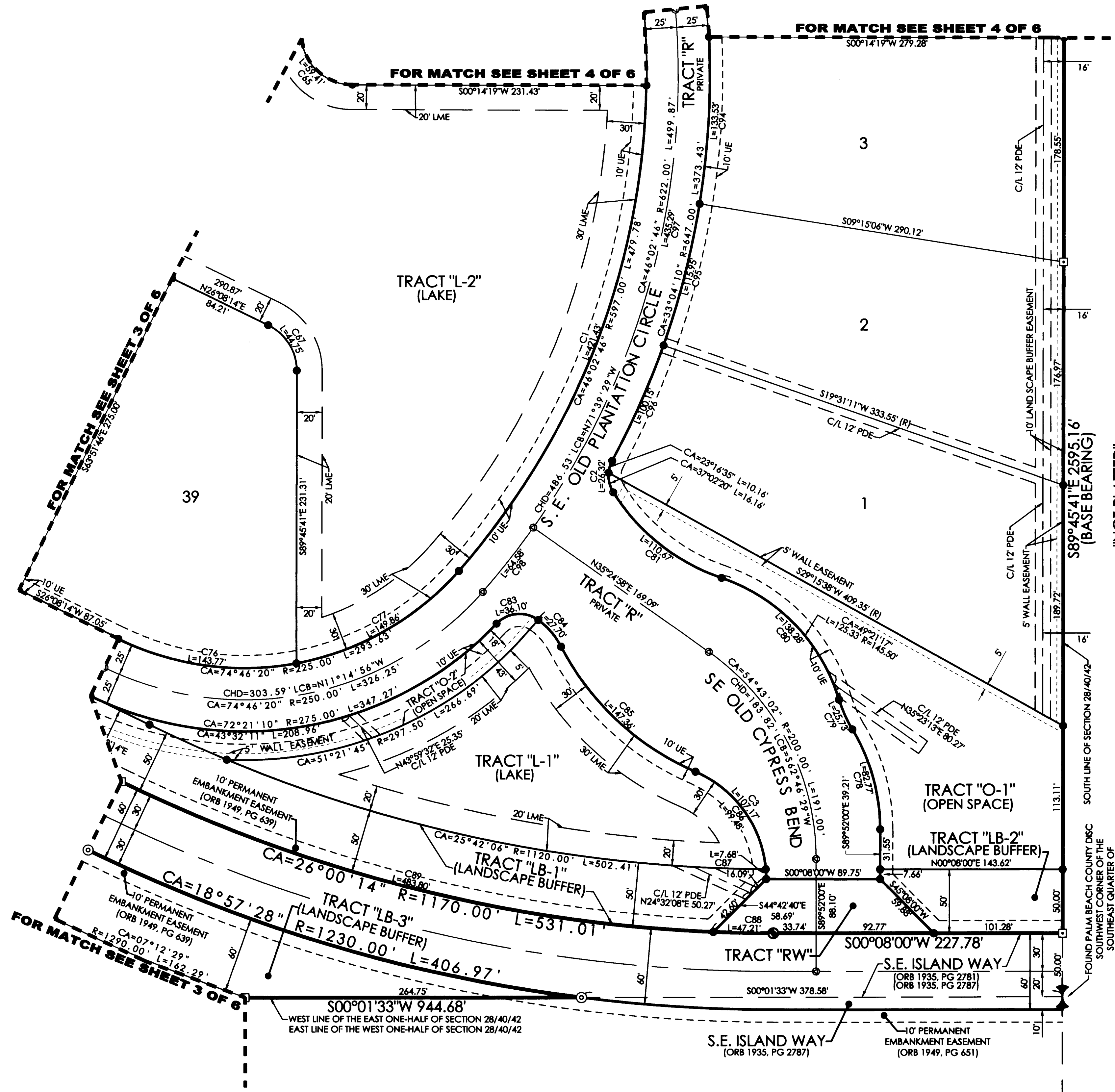
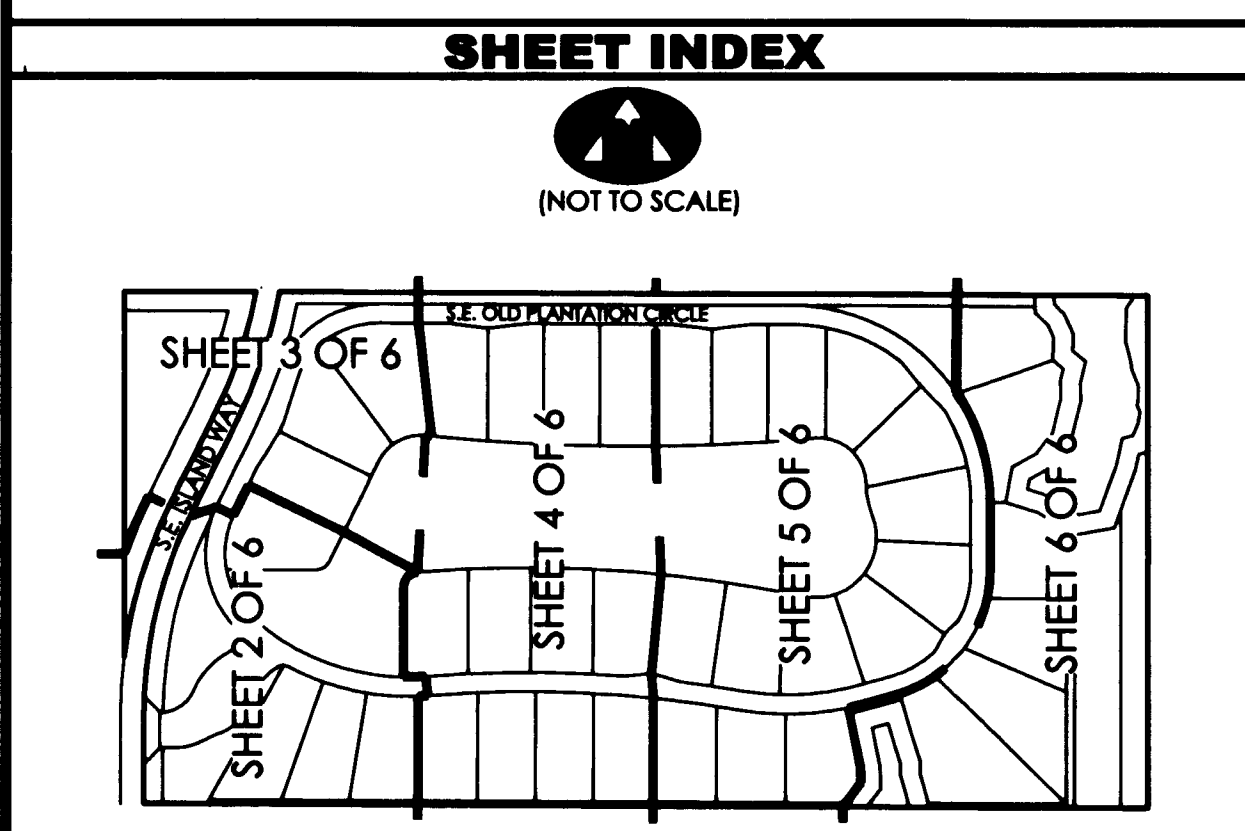


OLD PLANTATION PUD
 LYING IN THE SOUTH HALF OF THE SOUTHEAST QUARTER OF SECTION 28,
 TOWNSHIP 40 SOUTH, RANGE 42 EAST, MARTIN COUNTY, FLORIDA



CURVE TABLE				
C1	CA=40°26'44"	R=597.00'	L=421.43'	LCB=S68°51'28"E CHD=412.73'
C2	CA=60°18'55"	R=25.00'	L=26.32'	LCB=S88°13'51"W CHD=25.12'
C3	CA=66°44'31"	R=92.00'	L=107.17'	LCB=N56°45'45"E CHD=101.21'
C65	CA=85°06'15"	R=40.00'	L=59.41'	LCB=S42°47'26"W CHD=54.10'
C67	CA=64°06'05"	R=40.00'	L=44.75'	LCB=N58°11'16"E CHD=42.45'
C76	CA=36°36'37"	R=225.00'	L=143.77'	LCB=S07°49'55"W CHD=141.33'
C77	CA=38°09'43"	R=225.00'	L=149.86'	LCB=S29°33'14"E CHD=147.11'
C78	CA=31°12'00"	R=152.00'	L=82.77'	LCB=N74°32'00"E CHD=81.75'
C79	CA=14°27'08"	R=102.00'	L=25.73'	LCB=S66°09'35"W CHD=25.66'
C80	CA=54°27'14"	R=145.50'	L=138.28'	LCB=N46°09'32"E CHD=133.14'
C81	CA=39°08'28"	R=162.00'	L=110.67'	LCB=S38°30'09"W CHD=108.53'
C83	CA=82°43'53"	R=25.00'	L=36.10'	LCB=N04°50'59"W CHD=33.04'
C84	CA=26°14'14"	R=60.50'	L=27.70'	LCB=N49°38'04"E CHD=27.46'
C85	CA=39°21'42"	R=214.50'	L=147.36'	LCB=S43°04'20"W CHD=144.48'
C86	CA=61°57'24"	R=92.00'	L=99.48'	LCB=N54°22'11"E CHD=94.71'
C87	CA=04°47'07"	R=92.00'	L=7.68'	LCB=N87°44'26"E CHD=7.68'
C88	CA=02°18'43"	R=1170.00'	L=47.21'	LCB=S01°17'22"W CHD=47.21'
C89	CA=23°41'31"	R=1170.00'	L=483.80'	LCB=S14°17'29"W CHD=480.36'
C94	CA=11°49'30"	R=647.00'	L=133.53'	LCB=S86°39'39"E CHD=133.29'
C95	CA=10°16'05"	R=647.00'	L=115.95'	LCB=S75°36'52"E CHD=115.79'
C96	CA=08°52'08"	R=647.00'	L=100.15'	LCB=S66°02'46"E CHD=100.05'
C97	CA=40°05'49"	R=622.00'	L=435.29'	LCB=S74°37'57"E CHD=426.46'
C98	CA=05°56'57"	R=622.00'	L=64.58'	LCB=S51°36'34"E CHD=64.55'



LEGEND

C/L	DENOTES A CENTERLINE	R	DENOTES RADIUS DISTANCE
PDE	DENOTES PRIVATE DRAINAGE EASEMENT	L	DENOTES ARC LENGTH DISTANCE
UE	DENOTES UTILITY EASEMENT	CA	DENOTES CENTRAL ANGLE
(R)	DENOTES A RADIAL LINE	LCB	DENOTES LONG CHORD BEARING
EAE	DENOTES EMERGENCY ACCESS EASEMENT	CHD	DENOTES CHORD DISTANCE
LME	DENOTES LAKE MAINTENANCE EASEMENT	ORB	DENOTES OFFICIAL RECORDS BOOK
		PG	DENOTES PAGE
		F.D.N.R.	DENOTES FLORIDA DEPARTMENT OF NATURAL RESOURCES

SURVEYOR'S NOTES

- THE BASE BEARING, AS SHOWN HEREON, IS SOUTH 89°45'41" EAST ALONG THE SOUTH LINE OF THE EAST ONE-HALF OF SECTION 28, TOWNSHIP 40 SOUTH, RANGE 42 EAST AS SHOWN HEREON.
- IN THOSE INSTANCES WHERE UTILITY OR DRAINAGE STRUCTURES ARE CONSTRUCTED IN CONFLICT WITH THE PLATTED PERMANENT CONTROL POINT POSITION, STRADDLERS MONUMENTED AS PERMANENT CONTROL POINTS WILL BE SET TO REFERENCE THE PLATTED POSITION.
- POINTS THAT INTERSECT CURVES ARE NOT RADIAL UNLESS OTHERWISE NOTED.
- THIS INSTRUMENT WAS PREPARED BY WM. R. VAN CAMPEN, P.S.M. NO. 2424, IN AND FOR THE OFFICES OF ASSOCIATED LAND SURVEYORS, INC., 4152 WEST BLUE HERON BOULEVARD, SUITE 121, RIVIERA BEACH, FLORIDA, 33407

FILE: P281 PLAT	
FB:	WO.NO.: P281
SCALE: 1"=60'	DATE: 9/16/2005
DWN: KVC	SHEET 2 OF 6

ASSOCIATED LAND SURVEYORS, INC.
 4152 W. BLUE HERON BOULEVARD-SUITE 121
 RIVIERA BEACH, FLORIDA 33404
 PHONE: (561) 848-2102 FAX: (561) 844-9659 EMAIL: ALLSURVEY@AOL.COM